

History Connects Us All

Our Mission: "to collect, preserve, research and interpret the documents, photos and artifacts that connect us to Rancho Santa Fe and its past. The opportunity to learn more about the history of this special village is offered through exhibitions, historic sites, archives, special events, educational programs and publications."

Landmark #1 on the map, La Flecha House, built in 1923, was one of master architect Lilian Rice's first designs. It is now the home of the RSF Historical Society and houses artifacts, documents, photographs, and furniture all donated to the Society mostly by the Reitz Family Trust.

In 1989, the State of California recognized Rancho Santa Fe's historical significance by designating the community a State Historic Landmark (#982) and amending that designation in 2004 with California Cultural Landmark status. Both of these designations are largely due to Rancho Santa Fe's role as a model for planned communities, its development of an adaptive thematic design tradition as established in the Village and its strict adherence to the plan and theme through the ensuing years.

In 1991, the Historic American Building Survey, in a partnership of Federal and community-generated funding, completed a survey of Village buildings. The survey documented their architecture, structural characteristics and use history. A total of 11 buildings and homes within the community have been placed on the National Register of Historic Places. The results of the survey reside in the Library of Congress.

The RSF Historical Society is proud of its role in preserving the community's history and heritage. We hope you'll enjoy your walking tour.



About Lilian Rice: Lilian Rice, a National City, CA native and a 1910 graduate of the University of CA Berkeley School of Architecture, was the architect in charge of the design of Rancho Santa Fe. Her body of work spans the commercial and civic core of the Village and a number of notable residences.

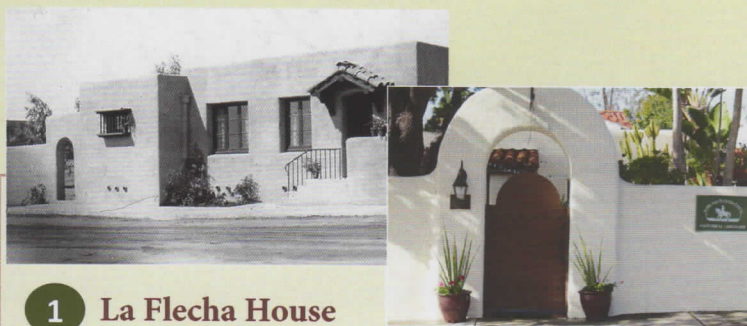


Walking Tour of the Historic Rancho Santa Fe Village



www.rsfhs.org

6036 La Flecha, PO Box 1
Rancho Santa Fe, CA 92067



1 La Flecha House

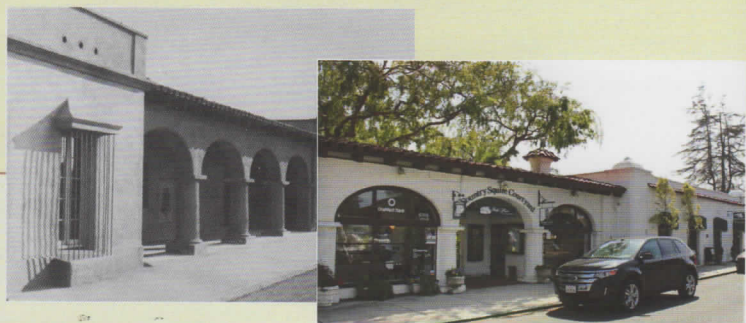
The first residence in Rancho Santa Fe designed by Lilian Rice in 1923 is an example of the Spanish Colonial Revival architecture style she set for the community. It is also one of the first all-electric homes in San Diego County and served as the first library. Donated to the Rancho Santa Fe Historical Society by the Reitz Family in 1988, it was restored with a section of an interior adobe wall still visible under glass.

2 State Historic Landmark #982



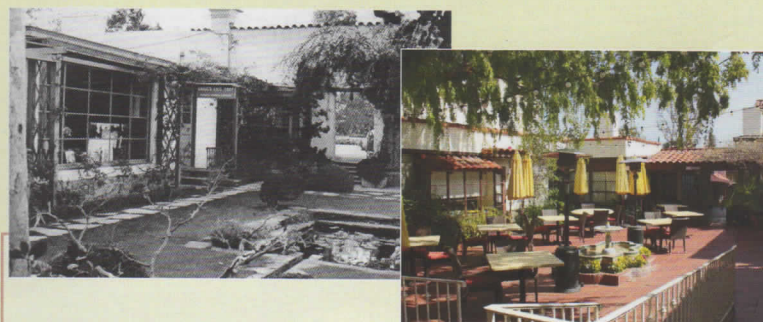
On February 3, 1989 the California State Historical Resources Commission approved the Covenant area known as Rancho Santa Fe as a designated State Historic Landmark.

Plaques marking this are found at the entrance to roads leading into the Covenant.



3 Original Santa Fe Land Improvement Company Office

This landmark listed on the National Register of Historic Places has retained almost all its historical integrity. It remains the cornerstone of the commercial block designed by Lilian Rice in 1923 with architectural details establishing a distinctive and varied harmony. Today it is home to restaurant, office, and retail space.



4 Country Squire Courtyard

The arched entry opens to an interior courtyard with a charming small pool. Originally it provided space for equipment for the Santa Fe Land Improvement Company and for Glenn Moore, the landscape architect who worked with Lilian Rice on many of the early estates. Today a fountain replaces the pool.



5 The Francisco Building

This office building, completed in 1923 for the Santa Fe Land Improvement Company, was also the location of the first post office in the Village, with a single counter and a scale at the rear of the room. In 1938, Robert Francisco purchased the building and opened Ashley's Market. Today the building contains offices.



6 Louise Badger Home

This Lilian Rice designed building during the late 1920s was used for storage for the adjoining garage quadrangle, and later as a home for Louise Badger, who operated a soda fountain in an adjacent building. The Badger family has managed citrus groves in Rancho Santa Fe since its earliest days. This building and a subsequently added building currently house an antique store.



7 La Valencia Apartments

This two-story building in the Monterey style was built for Barron Millard, one of the early planners and developers of the Rancho Santa Fe golf course. It accommodated rooms for short term rentals upstairs with offices below. Lilian Rice had her offices here. It retains much of the original beautiful facade. Today various businesses occupy the space.



10 First Rancho Santa Fe School

Designed by Lilian Rice and Hamond Whitsitt and completed in 1924. That year's graduating class consisted of one student, Ivy Fidero Laughter. The corner building was added at a later date. Today it is combined restaurant and commercial space.



8 Lilian Rice Row Houses

The rowhouses, with joint walls and similar floor plans, were designed to provide private residences within the Village commercial district. Lilian Rice gave each a separate and distinct exterior along the street, with lovely gardens behind high walls in the Spanish style. Completed in 1927, two have been listed on the National Register of Historic Places. Today they remain private residences.



11 Original Rancho Santa Fe Garden Club

In 1937, Lilian Rice changed her architectural style for this board and batten building. The Santa Fe Land Company donated the land and private donors contributed the clubhouse and furnishings. The buildings are now office and retail space.



9 Joers/Ketchum Store

Designed and completed in 1927, this was the first commercial building constructed in the Village by private owners, W.E. Joers and H.E. Ketchum. The two-story design allowed for an apartment above and a store below. At one time, it served as a location for the post office. Today it is retail space.



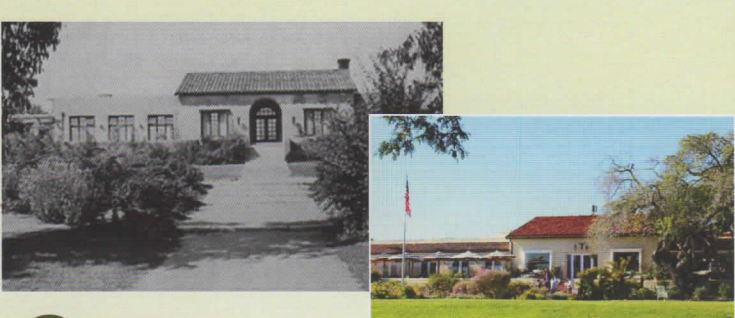
12 Second Site of Rancho Santa Fe School

Designed by Lilian Rice and later the site of the post office, this building is now the office of the RSF Homeowners Association.



13 Rancho Santa Fe Irrigation District

This building was designed by Lilian Rice in a residential style to blend into the neighborhood. A buttressed mule barn housed the equipment within. A recent careful restoration uncovered the original blue-green trim paint color, which was replicated in the remodel. Today it remains the Irrigation District office.



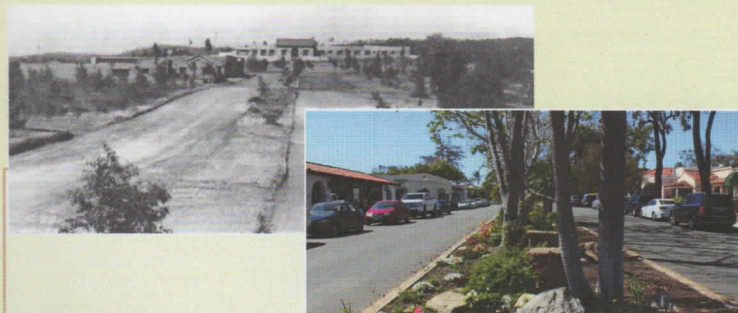
14 The Inn

Designed by Lilian Rice for the Santa Fe Land Improvement Company in 1923 and originally called "La Morada", The Inn set the style and provided accommodations for prospective buyers during the early days of Rancho Santa Fe. It continues in private hands to the present, with a renewed appreciation of its historic traditions.



15 Hilton House

A residence designed by Lilian Rice in 1924 and used for a time as her home. Today it is the Rancho Santa Fe Senior Center.



16 Paseo Delicias

Paseo Delicias, circa 1923. Today the roads are paved and trees and plantings are abundant. The spirit of the place still remains.

For membership information, please go to www.rsfs.org/membership.



The Historical Society offers the following books for sale about Rancho Santa Fe:

- *Rancho Santa Fe – a California Village* by the Rancho Santa Fe Historical Society
- *Arcadia – Rancho Santa Fe* by Vonn Marie May
- *Historic Buildings and Houses of Rancho Santa Fe* by the Rancho Santa Fe Historical Society

Map is not to scale.