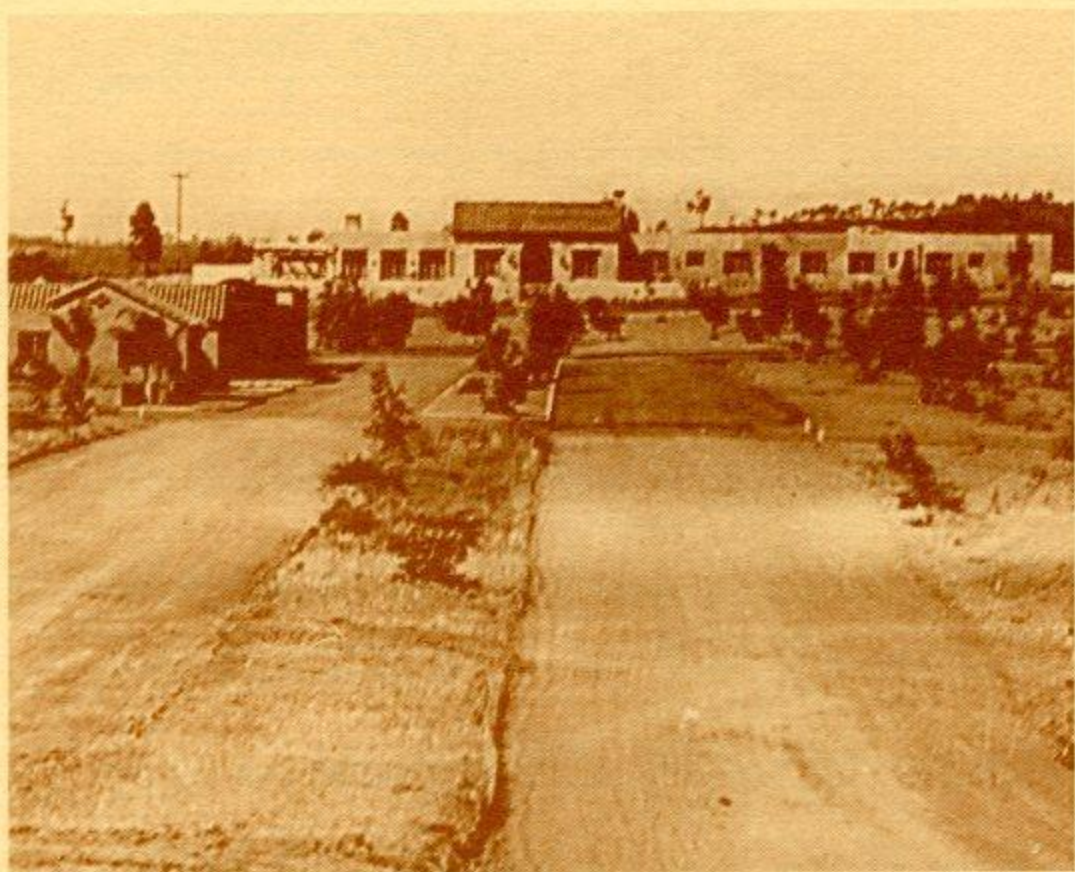
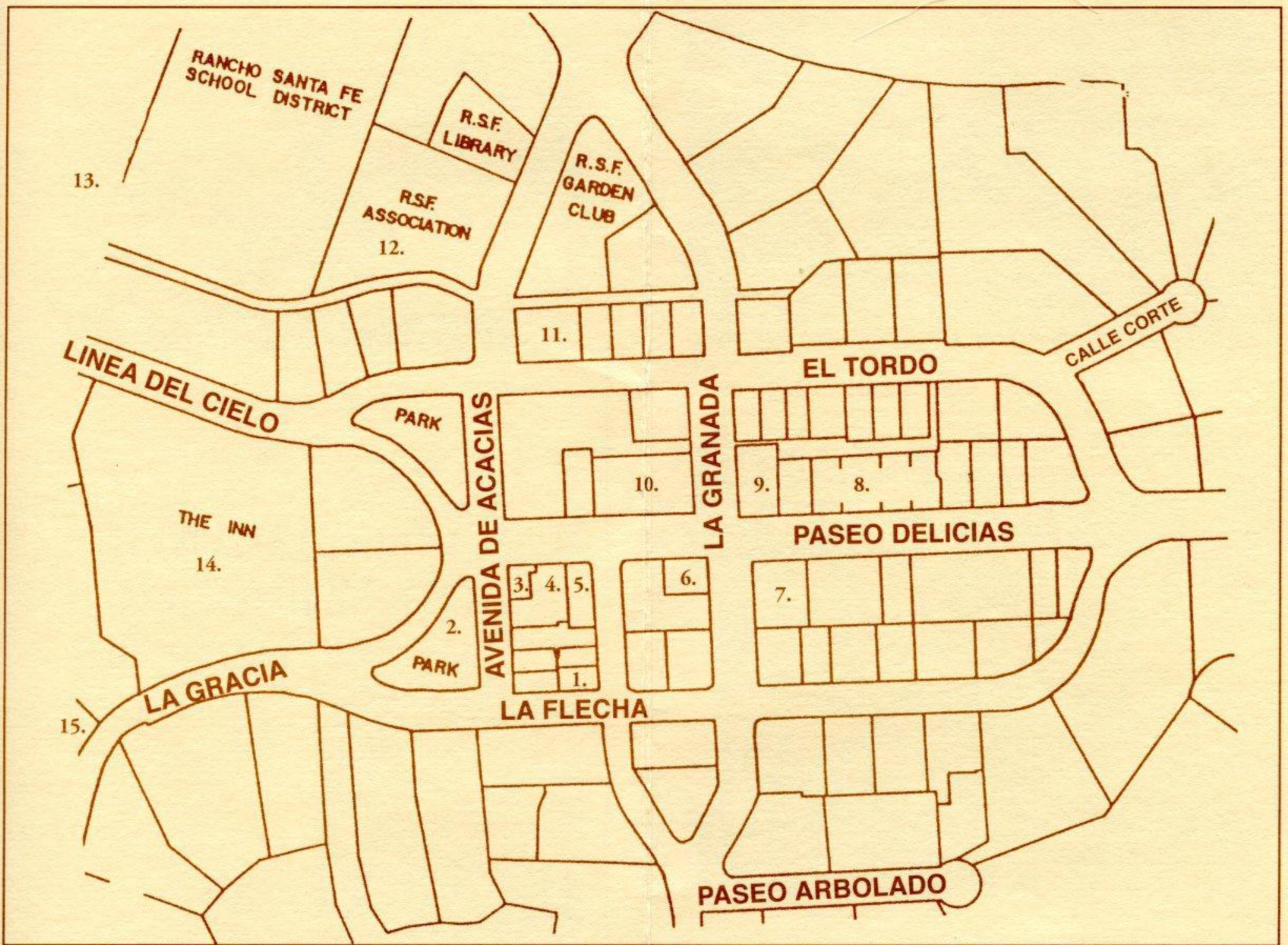


A WALK THROUGH
THE VILLAGE OF
RANCHO SANTA FE



Paseo Delicias, circa 1923.



1. La Flecha House

2. State Historic Landmark #982

3. Original Santa Fe Land Improvement Company Office

4. Country Squire Courtyard

5. The Francisco Building

6. Louise Badger Home/Toy Shop

7. La Valencia Apartments

8. Lilian Rice Rowhouses

9. Joers/Ketchum Store

10. First Rancho Santa Fe School

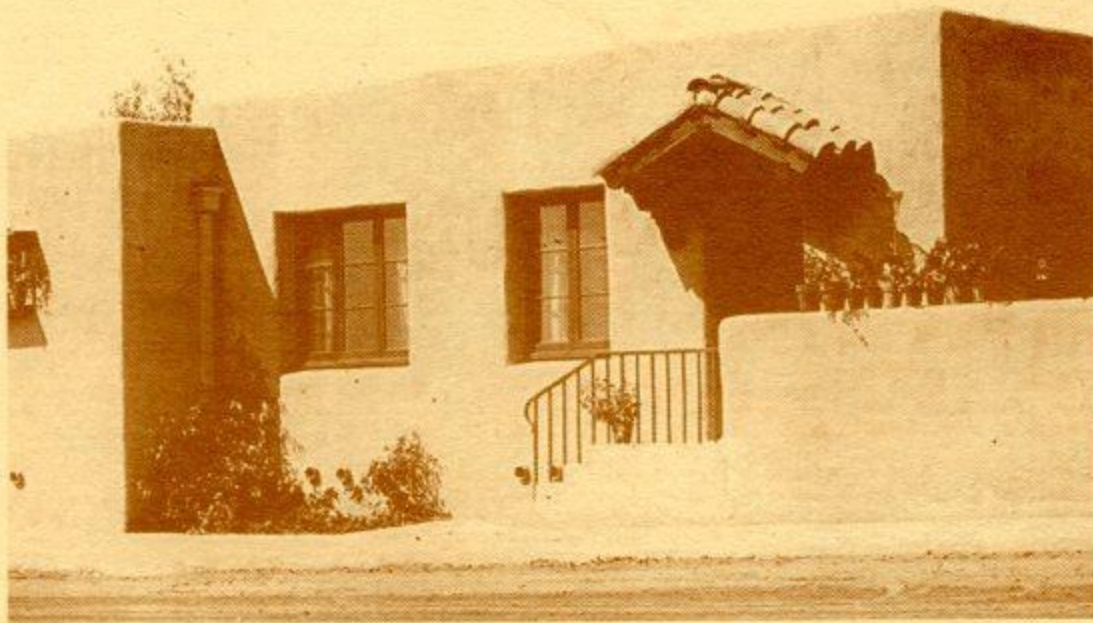
11. Original Rancho Santa Fe Garden Club

12. Second Site of The Rancho Santa Fe School

13. Rancho Santa Fe Irrigation District

14. The Inn

15. Hilton House



LA FLECHA HOUSE

The first residence in Rancho Santa Fe designed by Lilian Rice in 1923 as an example of the Spanish Colonial Revival architecture style she set for the community. It is also one of the first all-electric homes in the County of San Diego, and served as the first library. Given to the Rancho Santa Fe Historical Society by the Reitz family in 1988, it was restored with a section of an interior adobe wall still visible under glass.

STATE HISTORIC LANDMARK #982

On February 3, 1989 the California State Historical Resources Commission approved the Covenant area known as Rancho Santa Fe as a designated State Historic Landmark. The Association designated the Civic Center as a Local Historic District.



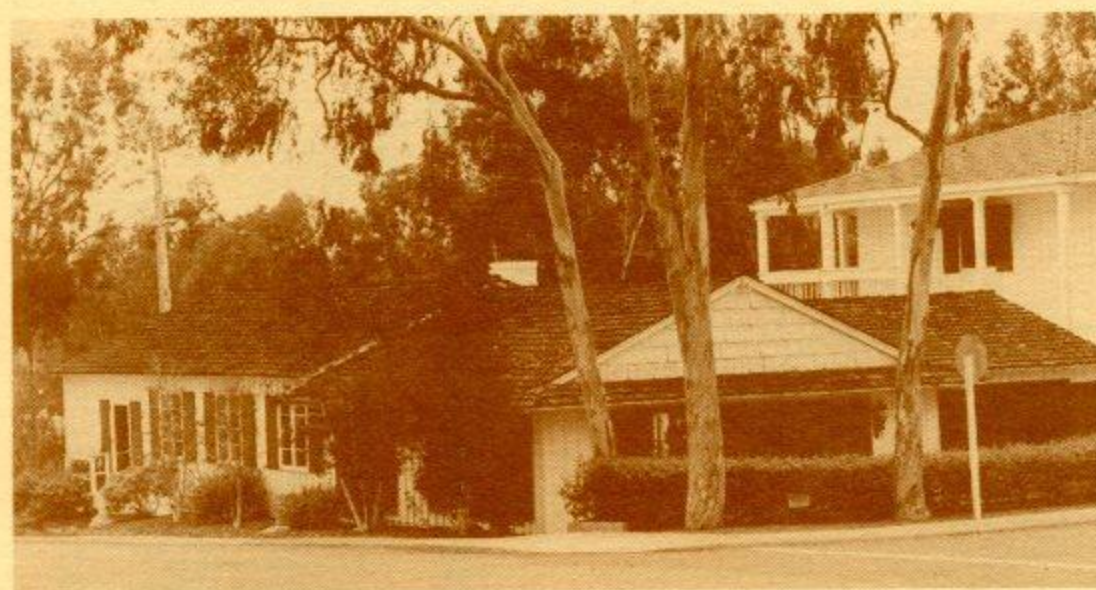
ORIGINAL SANTA FE LAND IMPROVEMENT COMPANY OFFICE

This local historic landmark listed on the National Register of Historic Places has retained almost all its historical integrity. It remains the cornerstone of the commercial block designed by Lilian Rice in 1923 with architectural details establishing a distinctive and varied harmony.



FIRST RANCHO SANTA FE SCHOOL

Designed by Lilian Rice and Hammond Whitsitt and completed in 1924. That year's graduating class consisted of one student, Ivy Fidero Laughter.



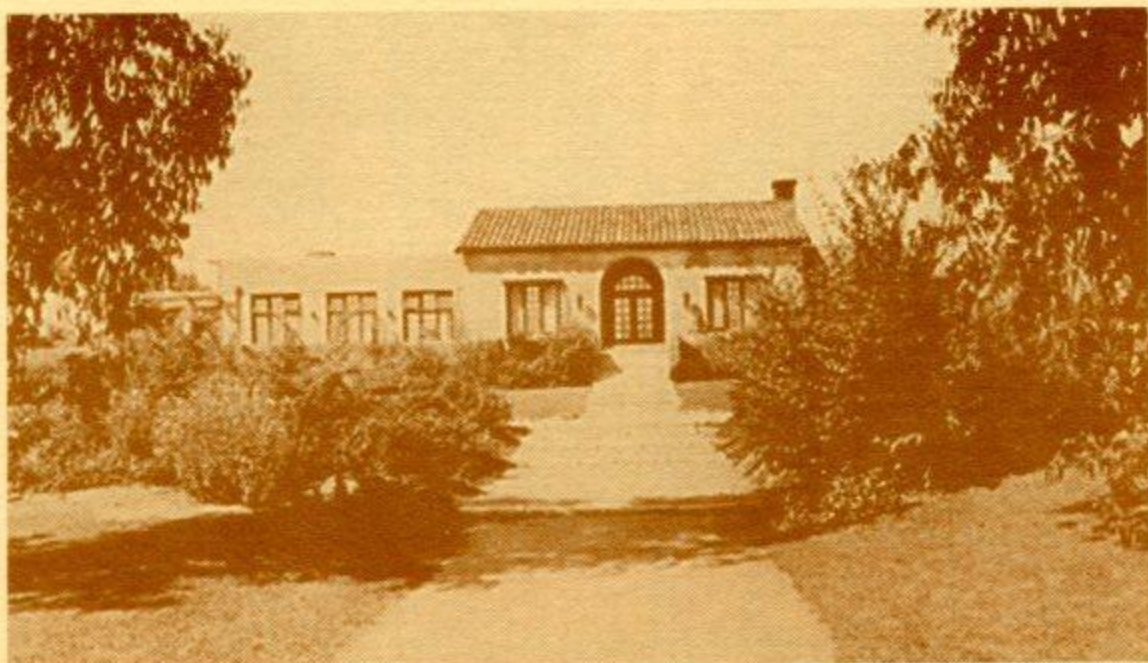
ORIGINAL RANCHO SANTA FE GARDEN CLUB

In 1937, Lilian Rice changed her architectural style for this board and batten building. The Santa Fe Land Improvement Company donated the land, and private donors contributed the clubhouse and furnishings. The buildings are now occupied by Country Friends, an organization which grew out of the Garden Club.



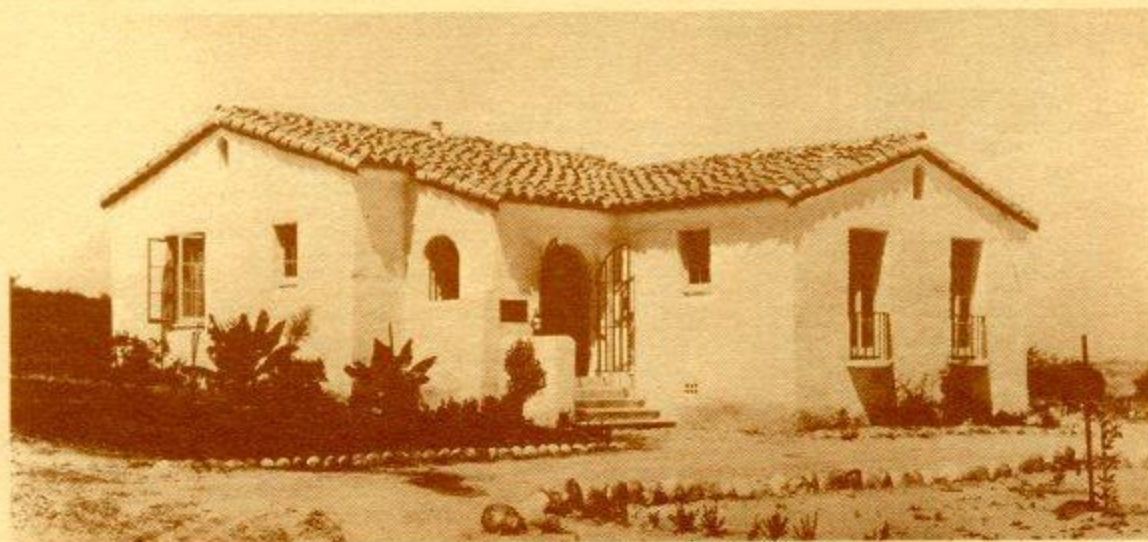
SECOND SITE OF THE RANCHO SANTA FE SCHOOL

Designed by Lilian Rice, later the site of the Post Office and now the offices of the Rancho Santa Fe Homeowners Association.



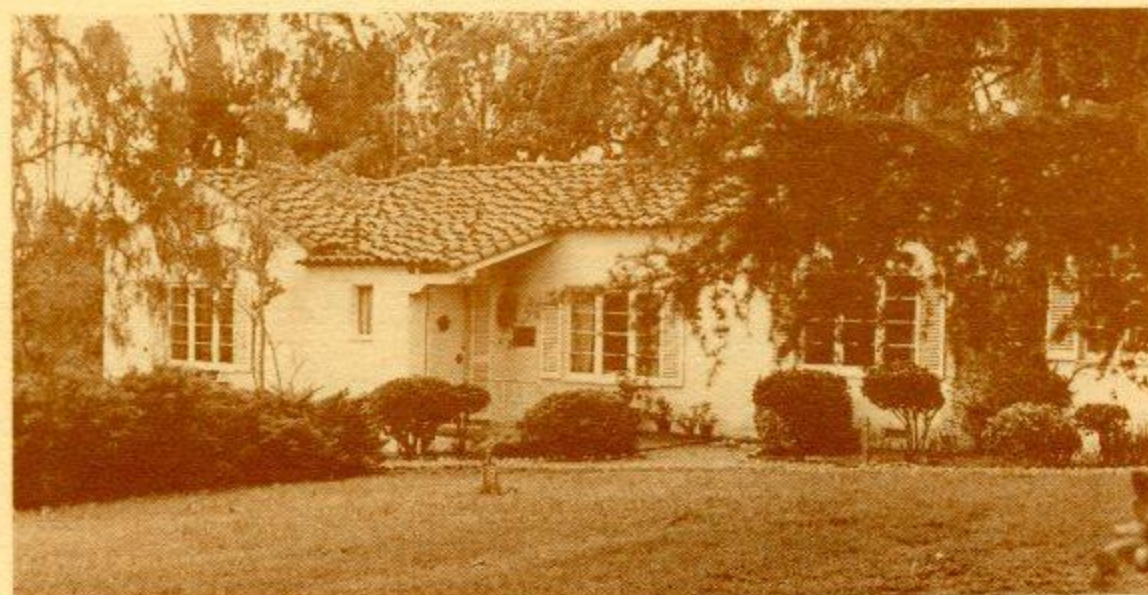
THE INN

Designed by Lilian Rice for the Santa Fe Land Improvement Company in 1923 and originally called "La Morada," it set the style and provided accommodations for prospective buyers during the early days of Rancho Santa Fe. It continues in private hands to the present, with a renewed appreciation of its historic traditions.



RANCHO SANTA FE IRRIGATION DISTRICT

Designed by Lilian Rice in a residential style to blend into the neighborhood. The buttressed mule barn housed the equipment. A recent careful restoration and remodel uncovered the original blue-green trim paint color.



HILTON HOUSE

A residence designed by Lilian Rice in 1924, and used for a time as her home. It is now the Rancho Santa Fe Senior Center.



COUNTRY SQUIRE COURTYARD

The arched entry opens to an interior courtyard with a charming small pool. Originally it provided space for equipment for the S.F.L.I. Company and Glenn Moore, the landscape architect who worked with Lilian Rice on many of the early estates.



THE FRANCISCO BUILDING

This office building, completed in 1923 for the S.F.L.I. Company, was also the location of the first post office in the Village – a single counter and scale at the rear of the room. In 1938 Robert Francisco purchased the building and opened “Ashley’s” which served for many years as the community’s only market.



LOUISE BADGER HOME/TOY SHOP

This Lilian Rice designed building from the late 1920s was used for storage for the adjoining garage quadrangle, which is now almost totally gone, and later as a home for Louise Badger, who operated a soda fountain in an adjacent building. The Badger family has managed groves in Rancho Santa Fe since earliest days. This building has also been a toy shop and antique shop.



LA VALENCIA APARTMENTS

This two-story building in the Monterrey style was built for Barton Millard, one of the early planners and developers of the Rancho Santa Fe golf course. It accommodated rooms for short term rentals upstairs with offices below. Lilian Rice had her offices here. It has been slightly remodeled, but retains much of the original beautiful façade.



LILIAN RICE ROWHOUSES

The rowhouses, with joint walls and similar floor plans, were designed to provide private residences within the Village commercial district. Lilian Rice gave each a separate and distinct exterior along the street, with lovely gardens behind high walls in the Spanish style. Completed in 1927, two have been listed on the National Register of Historic Places.



JOERS/KETCHUM STORE

Designed and completed in 1927, this was the first commercial building constructed in the Village by private owners, W.E. Joers and H.E. Ketchum. The two story design allowed for an apartment above and a store below. At one time it served as a location for the Post Office. It remains a non-covenant property.